

Swansea Park Waterwise Demonstration Garden

Land use / development type	Scale
Public open space	Street
Verge	Street

Efficient use of water	Scale
Groundwater	Street
Irrigation	
Waterwise Landscaping	Street

Site conditions	
Soils	Limestone, quartz, shell debris
Slope	1-2° slope

Local government	Location
Town of Mosman Park	Portsea Rise, Mosman Park

Water efficiency is a key challenge faced by many Australian communities. Perth has a hot, dry climate with a limited water supply, so it is vital to adapt public open space and garden designs to suit climate conditions.

Ecozoning is the process of converting underutilised turf areas into waterwise gardens with native plants on a mulch topsoil. This reduces turf areas that require maintenance and regular irrigation.

The design of waterwise gardens allows for reduced watering requirements for the first two years. The gardens should not require irrigation after the first two years of establishment. This significantly increases the water efficiency of the area.

Waterwise gardens demonstrate how ecozoning works and are an efficient and aesthetically pleasing way to increase biodiversity.

The Town of Mosman Park has transformed parts of the landscaping at Swansea Park into a waterwise garden. This initiative was co-funded through the Water Corporation's Waterwise Greening Scheme.

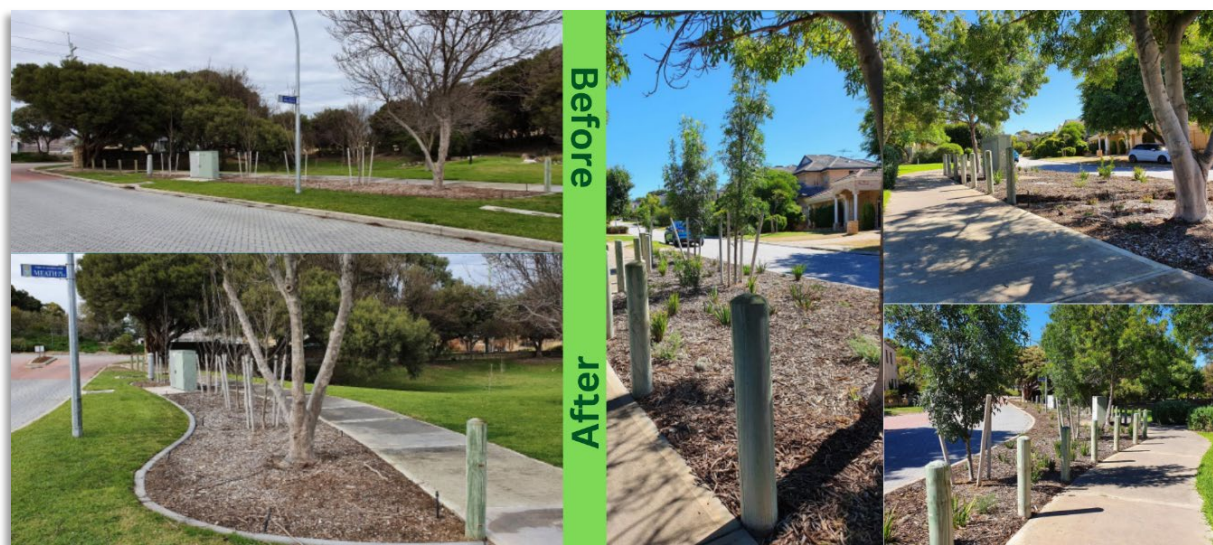
A key objective of these demonstration gardens is to educate residents and encourage and inspire similar garden installations in residential properties. Mosman Park locals were informed of the project and the benefits of waterwise gardens through explanatory flyers.

The Town of Mosman Park will host workshops to demonstrate how to convert verges into waterwise gardens.

The Town of Mosman Park also provides a Native Plant Subsidy Scheme in May each year. This allows residents to purchase native plants at low cost to encourage the installation of waterwise gardens.

Key Project Features

- Waterwise landscaping promoted to residents and implemented within public open space.
- Water consumption in parks reduced.
- Public workshops to educate residents.
- Improved amenity of local parks and increased public interest in verge transformation.



Development Costs¹

Weed Spraying	\$152
Labour costs	\$4,242
Machinery	\$350
Plants	\$3,357
Mulch	\$1,050

Total: **\$9,151**

¹All Costs are site specific and are an approximation given for guidance purposes only

Plant species

The following species were planted in the garden. Priority was given to native plants as they improve biodiversity and require minimal watering, while being aesthetically pleasing.

- *Banksia ashbyi* dwarf
- *Callistemon* 'Hot Pink'
- *Westringia* 'Blue Gem'
- *Leucophyta* 'Silver Nugget'
- *Anigozanthus* 'Yellow Gem' (Kangaroo Paw)
- *Anigozanthus* 'Big Red' (Kangaroo Paw)
- *Dianella* 'Revelation'
- *Chrysocephalum apiculatum* 'Silver and Gold' (Everlasting Daisy)
- *Carpobrotus* 'Aussie Rambler'

Issues

Project delivery progressed to plan with only minimal troubleshooting required. Adjustments were made to the waterwise plant species that were installed based on availability from the nurseries. Herbicide was applied to the turfed area twice to ensure that the turf did not grow in the new gardens. Consideration was given to the numerous utility infrastructure located in the verge area and all setback requirements were able to be met.

Outcomes

Rainfall recharge to groundwater is expected to improve due to the new landscaping. By reducing foot traffic and having less compacted soils, the waterwise garden should infiltrate more rainwater.

Site irrigation requirements have been reduced. Once the garden is fully developed, irrigation will remain capped and limited. The irrigation water is sourced from a Town of Mosman Park bore that is used to irrigate multiple parks. This project has reduced the Town's water requirements.

The garden provides a habitat for local wildlife.

The Town of Mosman Park will be hosting workshops for the public demonstrating how to convert verges into waterwise gardens. The targeted outcome of this is to inspire and motivate more community members to do their own transformations.



Contact details for further information
Town of Mosman Park – 08 9383 6600



Department of Biodiversity, Conservation and Attractions
Department of Planning, Lands and Heritage
Department of Water and Environmental Regulation



May 2023