



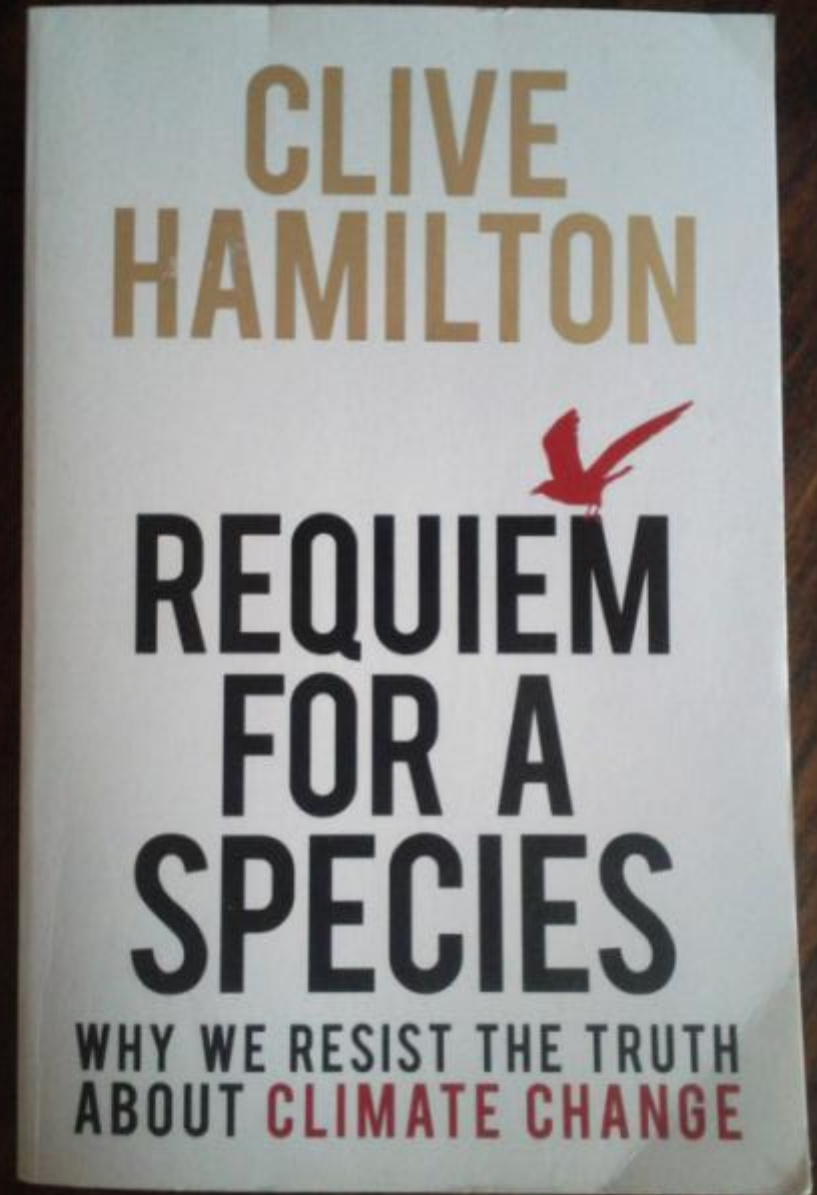
Rebuilding local 'sense of place' through landscape

DEMPSTER LPS

DEMPSTER LOCAL PLANT STRATEGIES

GRIEF

1. Denial
2. Bargaining
3. Anger
4. Depression
5. Acceptance

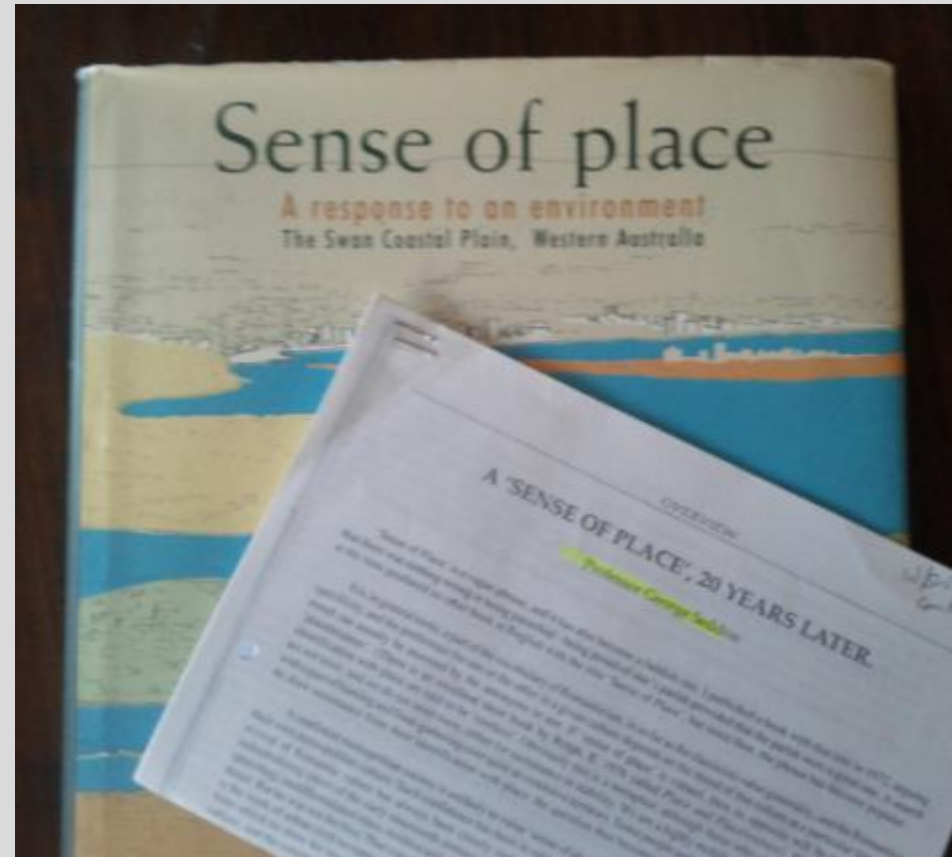


Prof George Seddon

20 years later

“People who lack an identification with place are said to be ‘rootless’”

“Some people and societies, however, undoubtedly do draw sustenance from their identification with place; the question thus becomes, what? and how?”



REFERENCES



MOTHER NATURE'S CLUES

- Have 'Heart and Mind'
- Read the Land
- Real Intent
- The True Story
- Reduce the Scarring



Advice From A Tree

- Stand Tall And Proud
- Go Out On A Limb
- Remember Your Roots
- Drink Plenty of Water
- Be Content with Your Natural Beauty
- Enjoy the View

Joan L. Rappin



HEART AND MIND

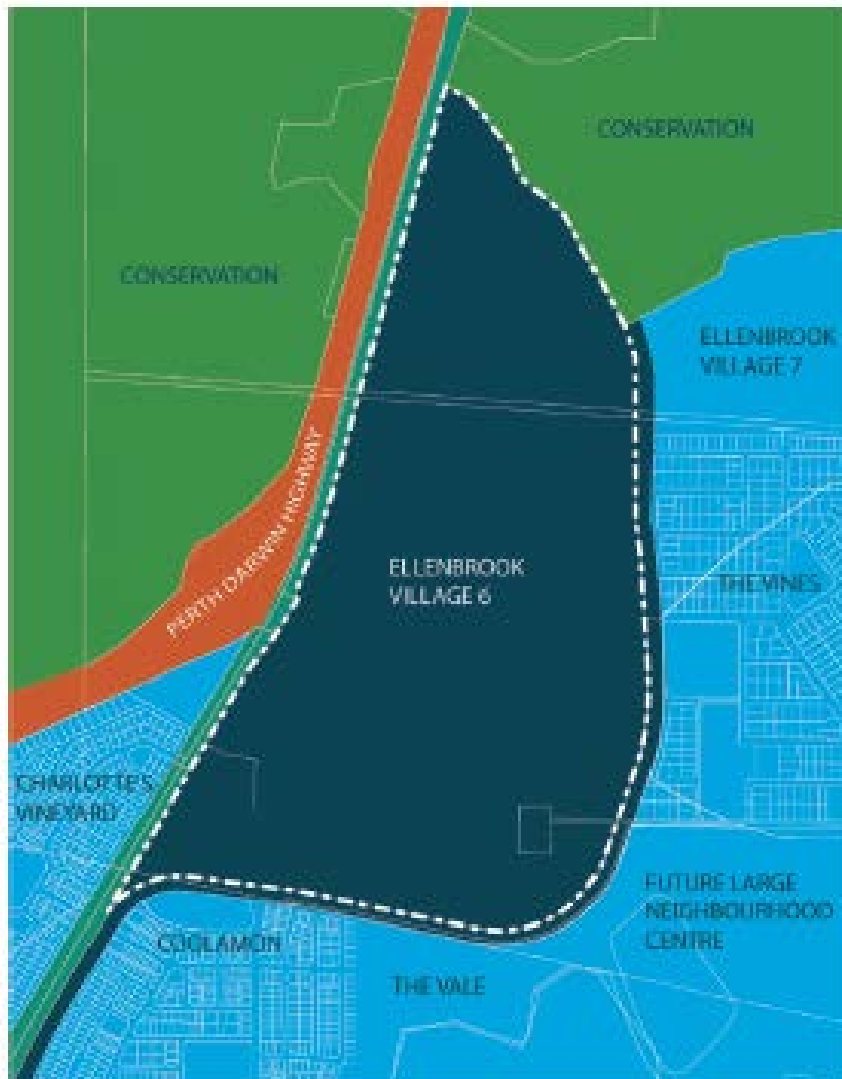
VILLAGE 6 - ELLENBROOK DEVELOPMENT PLAN

PREPARED FOR
Ellenbrook Management Pty Ltd

CONSULTANCY TEAM

Roberts Day	- Town Planning + Design
Cossill and Webley	- Engineers
EPCAD	- Landscape Architects
Whelans	- Surveyors
Phillipa O'Brien	- Cultural Planning
Sinclair Knight Merz	- Traffic Engineers
Sharni Howe Architects	- Urban Design

THE LAND



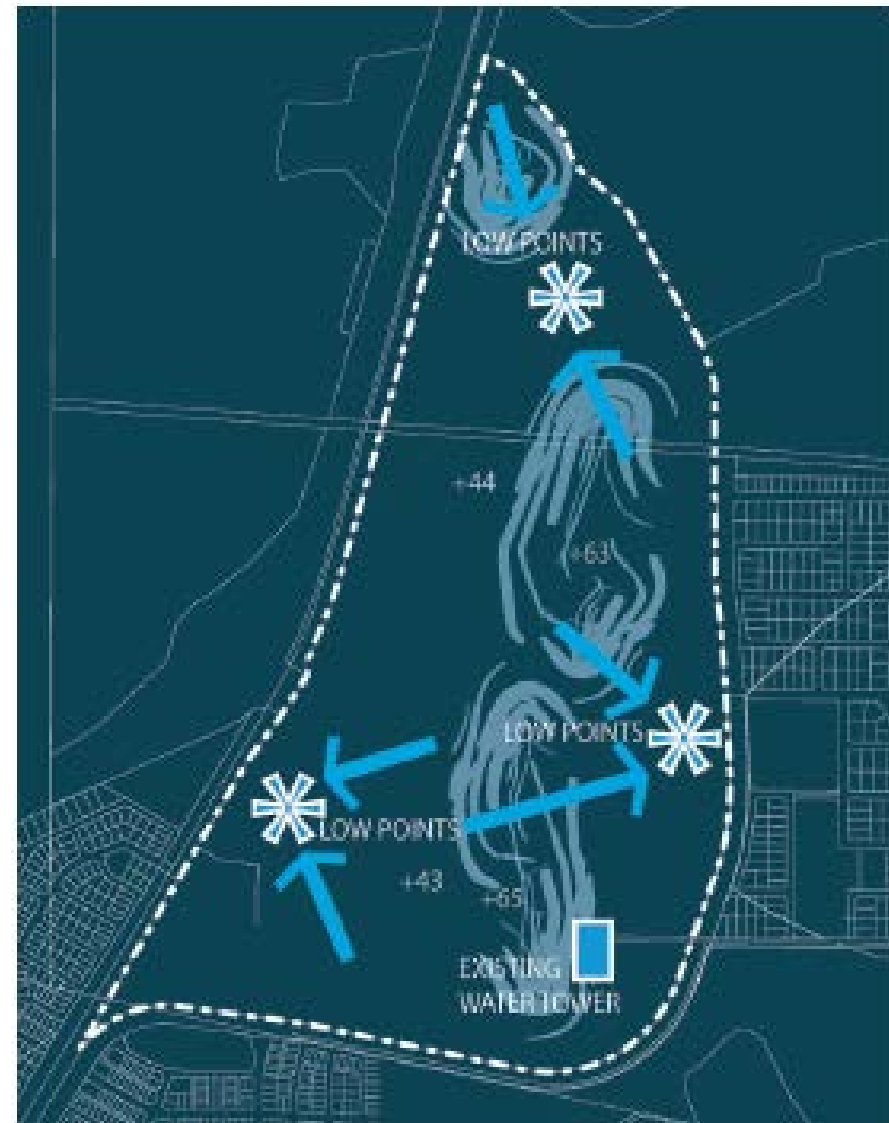
LOCAL CONTEXT



THE LAND



WETLANDS



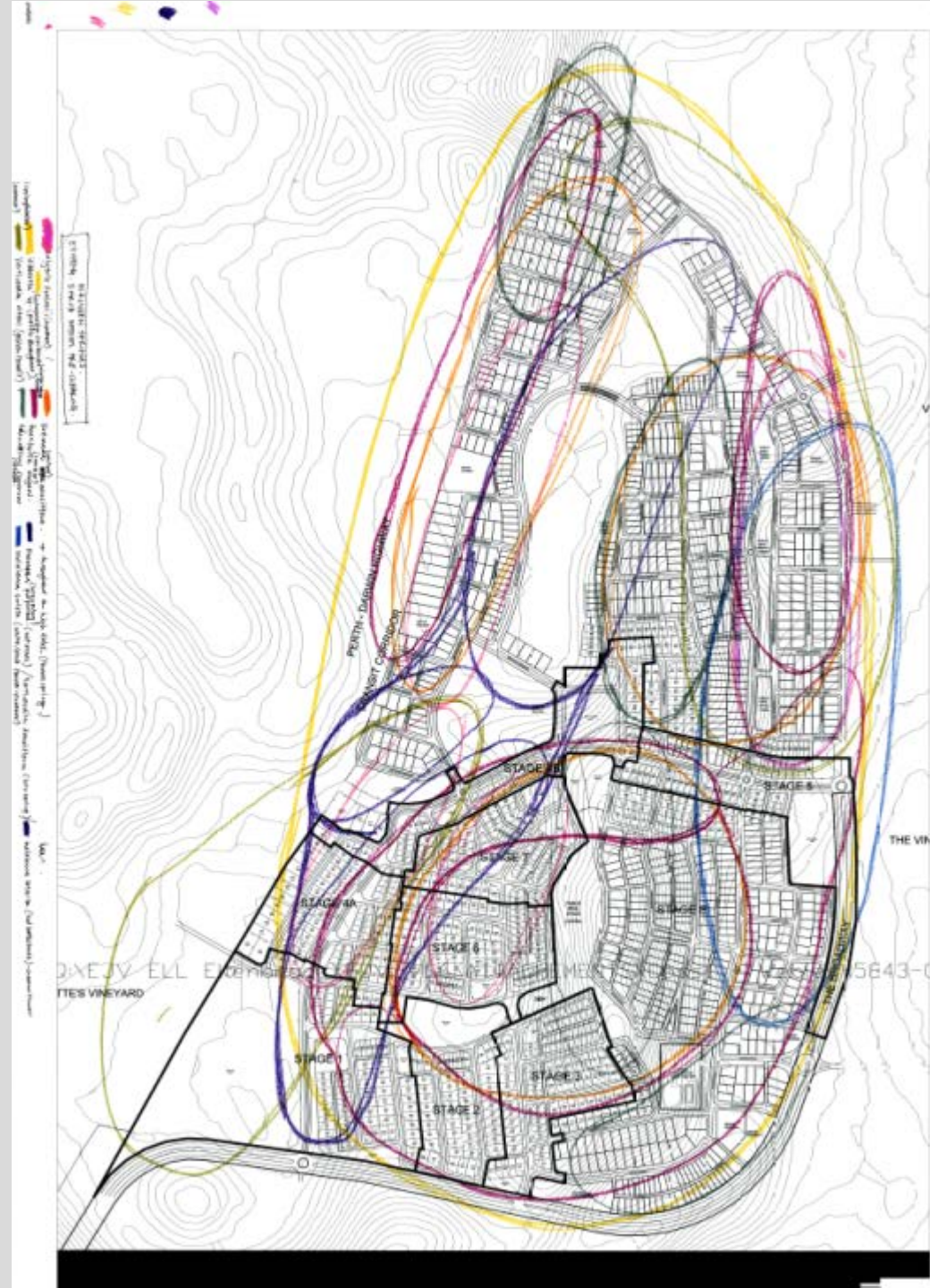
LANDFORM



THE LAND

Focus on the

- Sub Communities
 - Fauna relationships
 - Root systems
- the little things.....
- the things you can't see...



THE INTENT

Public Open Space Schedule

Public Open Space Required (10%)	15.4ha
Public Open Space Provision	
1 – Active	1.69ha
2 – Passive	1.22ha
3 – Active/Passive	0.53ha
4 – Active/Passive	0.72ha
5 – Active/Passive	0.30ha
6 – Active	1.56ha
7 – Active	0.27ha
8 – Active/Passive	4.50ha
9 – Active/Passive	1.30ha
10 – Active/Passive	4.58ha
Subtotal	16.67ha
Retained Wetlands	12.6ha
Total Open Space Provided	29.27ha



VILLAGE 6 DEVELOPMENT PLAN

THE STORY





SCARING





MY ROLE TODAY

- Ongoing reduction of scaring
- Get the landscape ready for handover
- Water/root relationships investigations
- Future water planning for local plant usage in the landscapes
- Save water, reduce maintenance costings
- Better irrigation scheduling

ACKNOWLEDGEMENTS

Danny Murphy – LWP Property Group

The Malvern Spring Project Team members

Scott Steer – Ellenbrook and Alkimos Landscape
Manager

Hazel & Bill Dempster

Dr Noel Nannup

Linda Daglish - photos



Local Plant Master Classes

REGISTER YOUR INTEREST

DEMPSTER LPS

DEMPSTER LOCAL PLANT STRATEGIES

Spirit of Place



EcoCulture Limited