

Non-Drinking Water in Western Australia: The Water Corporation Perspective

Neil McGuinness
Manager Non Drinking Water,
Water Industry Policy Branch

November 2011



Presentation outline

Current situation

External Landscape

Perth and Mandurah
NDW Strategy

Dual Reticulation
Policy

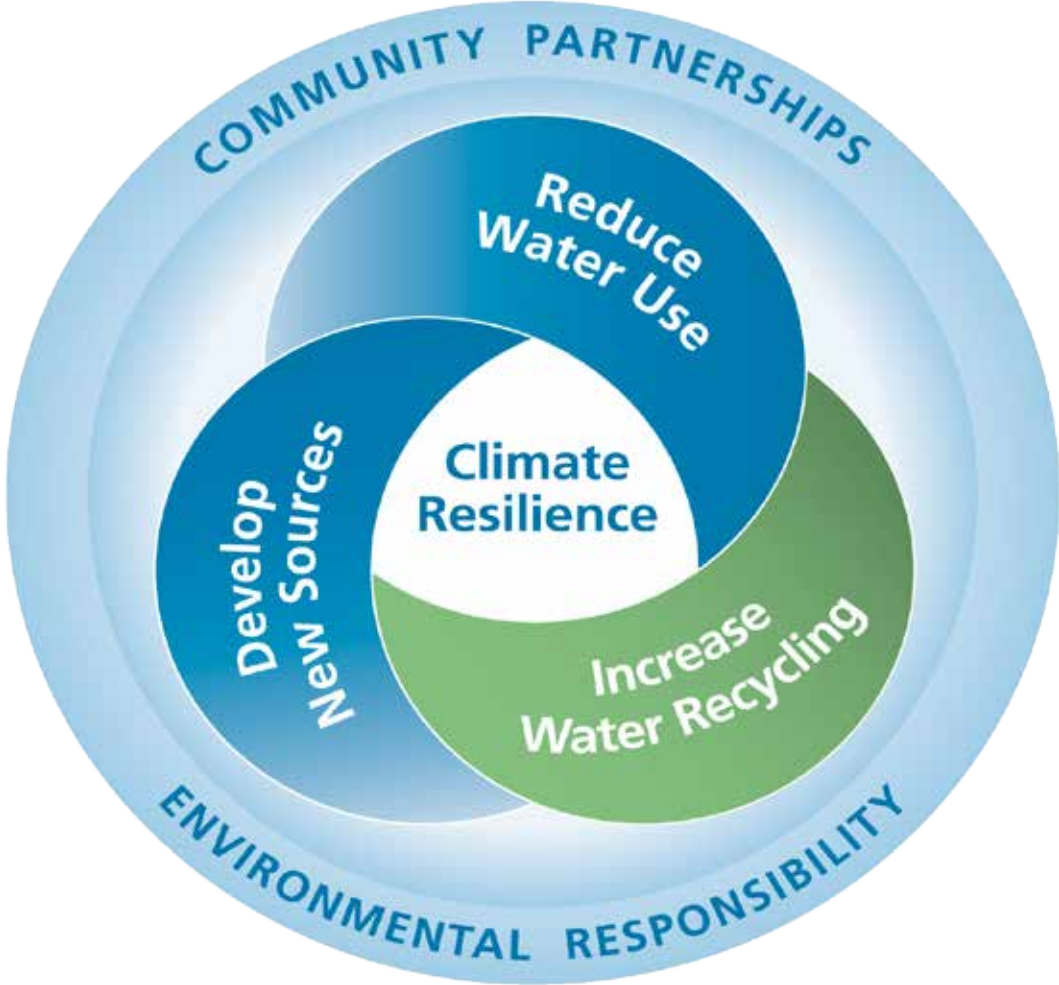
Sewer Mining Policy

Water Recycling
Policy

H2Options update

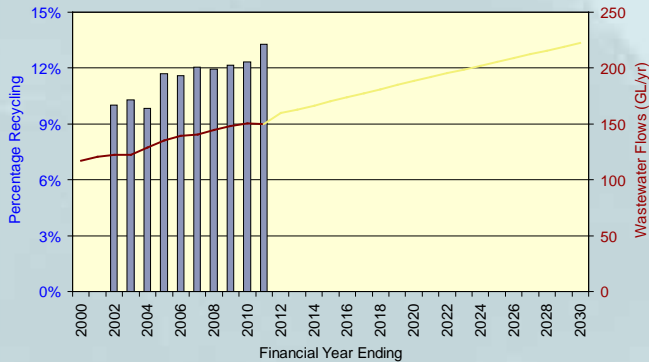
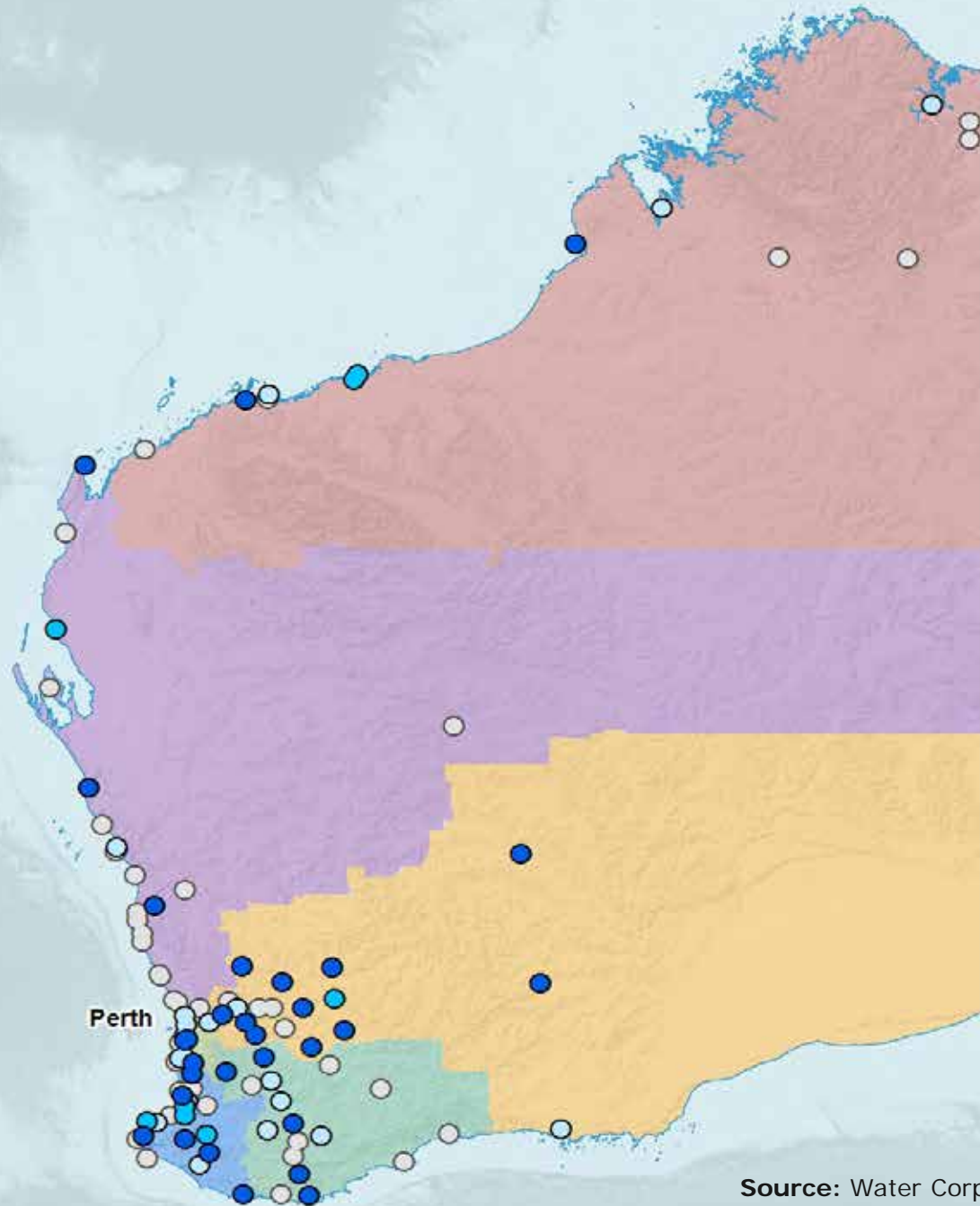


Our portfolio approach



RECYCLING LEVEL	PERCENTAGE
HIGH	80 TO 100%
MEDIUM	50 TO 80%
LOW	UP TO 50%
NO RECYCLING	NONE

REGION
NORTH WEST
MID WEST
GOLDFIELDS & AGRICULTURAL
PERTH
SOUTH WEST
GREAT SOUTHERN

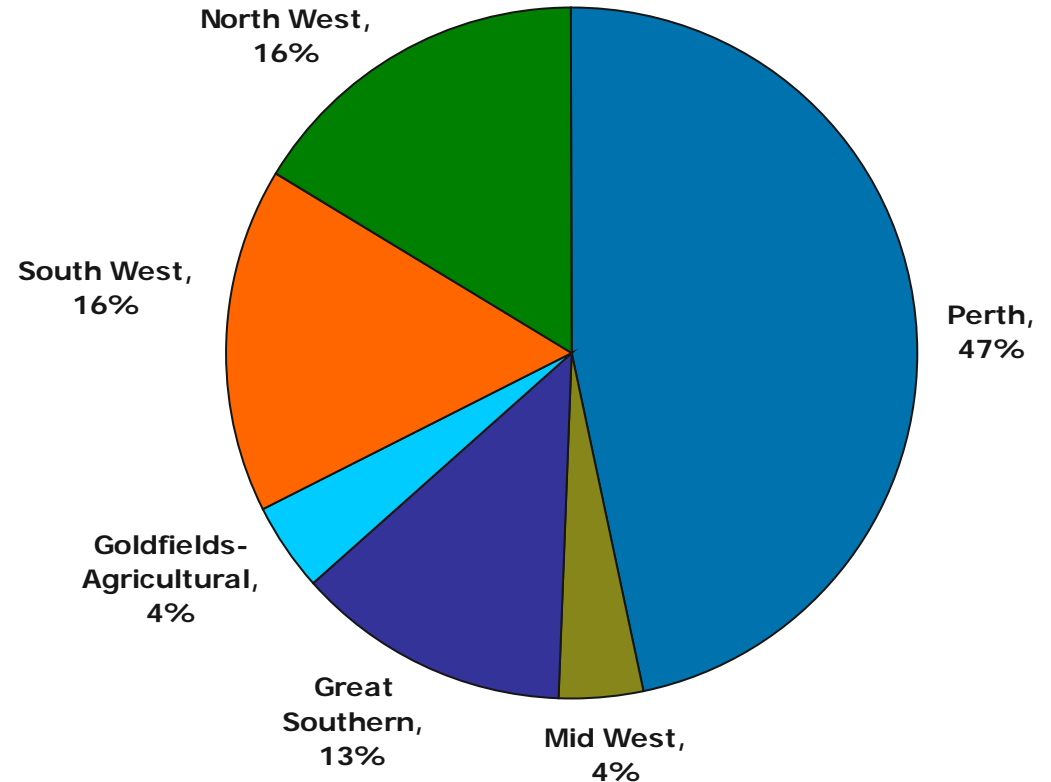


Source: Water Corporation, 2011

Water Corporation – recycling around the State

Total recycled water supplied in 2010-2011:

19,594 ML



Scheme	Recycling percentage
Perth and Mandurah	7.5%
All other regions	50.2%
Average across State	13.3%

External Landscape

- **Draft Approval Framework for the use of Non-Drinking Water in Western Australia (Oct 2010) – DoW;**
- Operational Policy 1.01 Managed Aquifer Recharge in Western Australia (Jan 2011) - DoW;
- Code of Practice for the Reuse of Greywater in Western Australia (2010) – DoH;
- Guidelines for the Non-Potable uses of Recycled Water In Western Australia (Aug 2011) – DoH;
- Draft Alternate Water Supply Guidelines – Stormwater and Rainwater (2009) – DoH;
- National Water Quality Management Strategy Phase 1 and 2 Recycled, Stormwater and Managed Aquifer Recharge Modules (2006-2009).

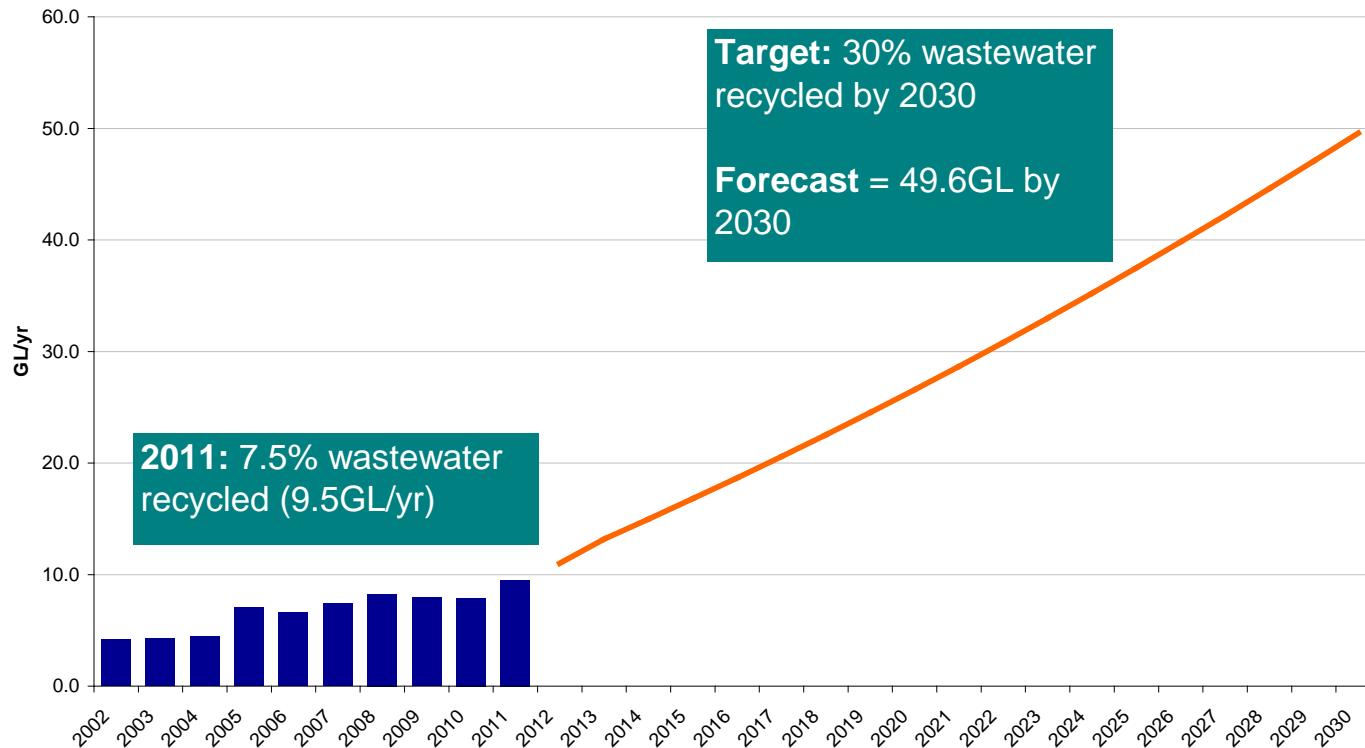
Perth-Mandurah Non Drinking Water Strategy



Why are we preparing a strategy?

Wastewater recycled in Perth and Peel

Figure 5: Forecasted wastewater recycled in Perth and Peel by 2030



Note: Includes the forecast reduction in wastewater inflows if water efficiency targets are met.

Perth-Mandurah Non-Drinking Water Strategy

Supporting Non-Drinking Water Schemes

- Governance
- Supply of recycled wastewater
- Alternative non-drinking water sources
- End uses
- Commercial considerations



Dual Reticulation Policy



Dual Reticulation Policy: key principles

- § Allocation of NDW sources
- § Early engagement on proposals
- § Levels of service
- § Design standards
- § Economic and asset lives
- § WC as service provider
- § Pricing and funding
- § Public information
- § Water efficiency



Sewer Mining Policy: key principles

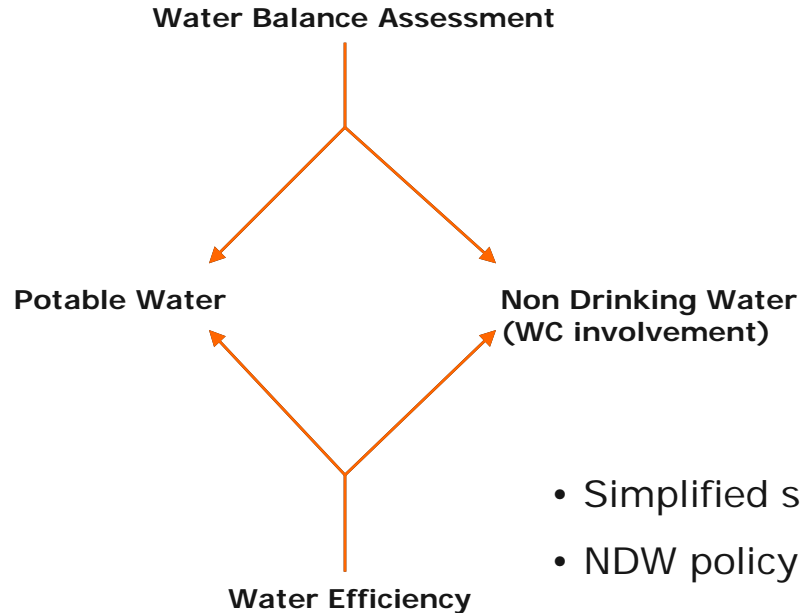
- § Early engagement
- § Allocation of raw wastewater
- § Wastewater quality and quantity management
- § Acceptance of sewer mining residuals
- § Funding
- § Service Provision
- § Water efficiency



Water Recycling Policy: key principles

	Community Benefit	Commercial
Only Disposal	<ul style="list-style-type: none"> § No charge for water resource § MoU required with end users § Delivery point is negotiable § Regulatory approvals (DEC, DoH, DoW) will be sought and gained by the Water Corp if required 	<ul style="list-style-type: none"> § Negotiable charge for water resource and joint costs § RWSA required with end users § Delivery point determined on a case by case basis § Regulatory approvals (DEC, DoH, DoW) will be sought and gained by the Water Corp if required
No Disposal	<ul style="list-style-type: none"> § No charge for water resource § Recycled Water Supply Agreement required with end users § Delivery point generally one of: <ul style="list-style-type: none"> • Last disinfection point • WWTP Boundary or • Meter but also can be negotiable § Regulatory approvals (DEC, DoH, DoW) will be sought and gained by Local Govt with support from the Water Corp 	<ul style="list-style-type: none"> § Negotiable charge for water resource and joint costs § RWSA required with end users § Delivery point is: <ul style="list-style-type: none"> • WWTP Boundary or Recycling Plant boundary or • Meter § Regulatory approvals (DEC, DoH, DoW) will be sought and gained by the third party

H2Options update



- Water Balance tool (Assumptions for metro will be updated)
- (Water Costing tool is proposed to be removed, however assumptions will be available)

- Simplified step-by-step guidelines
- NDW policy statements
- Info Sheets
- Alternative sources map
- Relevant documents templates (i.e. application and agreements)
- Contact details

Land Developers

Local Governments

Industrial Users

Key Messages

- The Water Corporation is keen to provide assistance with Non-Drinking Water (NDW) proposals and enquiries;
- An integrated approach is supported to provide appropriate sustainable NDW solutions;
- H2Options will continue to be the main tool available to assist with the early assessment of NDW projects;
- The Water Corporation is not the only service provider for NDW solutions.

Where to from here?

- To comment on the H2Options update, please contact us before the end of November;
- NDW project enquiries can be directed to Chris Higgs and the Recycling Team at **(water.recycling@watercorporation.com.au)**
- 2 fact sheets (Dual Reticulation and Sewer Mining) are now available to assist with the provision of information to the public.



Questions?

Neil McGuinness

Manager Non Drinking Water, Water Industry Policy Branch

(08) 9420 2497

neil.mcguinness@watercorporation.com.au