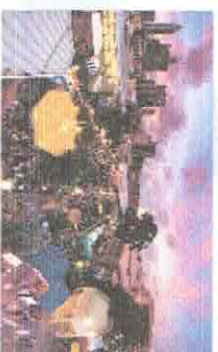


# Green Infrastructure in Perth & around the world - compiled by Esther Ngang for LIAWA

9



# Perth



2

## the hot facts!!

- environmental challenges in WA - wind, sun, gutless soil
- innovation challenges (building types and architecture, design and installation)
- lacking scientifically-based horticulture support as a result of lack of grants for WA-specific research
- growers' challenges - contract growing
- budget constraints for projects

## Perth in the last 10yrs

- placemaking
- greening of main roads
- hospitals - therapy gardens
- offices - greening arcades, placemaking
- public open spaces - balance of green spaces vs. hardscapes
- residential apartments - high density balanced with POS
- CBD - retail and hospitality - vertical gardens, terrariums
- CBD - events - Perth Urban Orchard, Elizabeth Quays
- Perth Underground - activating POS and Northbridge link
- developments more than 25km of Perth CBD - tight / no water allocations

# Already constructed

So what are the constraints in Perth?



# POS

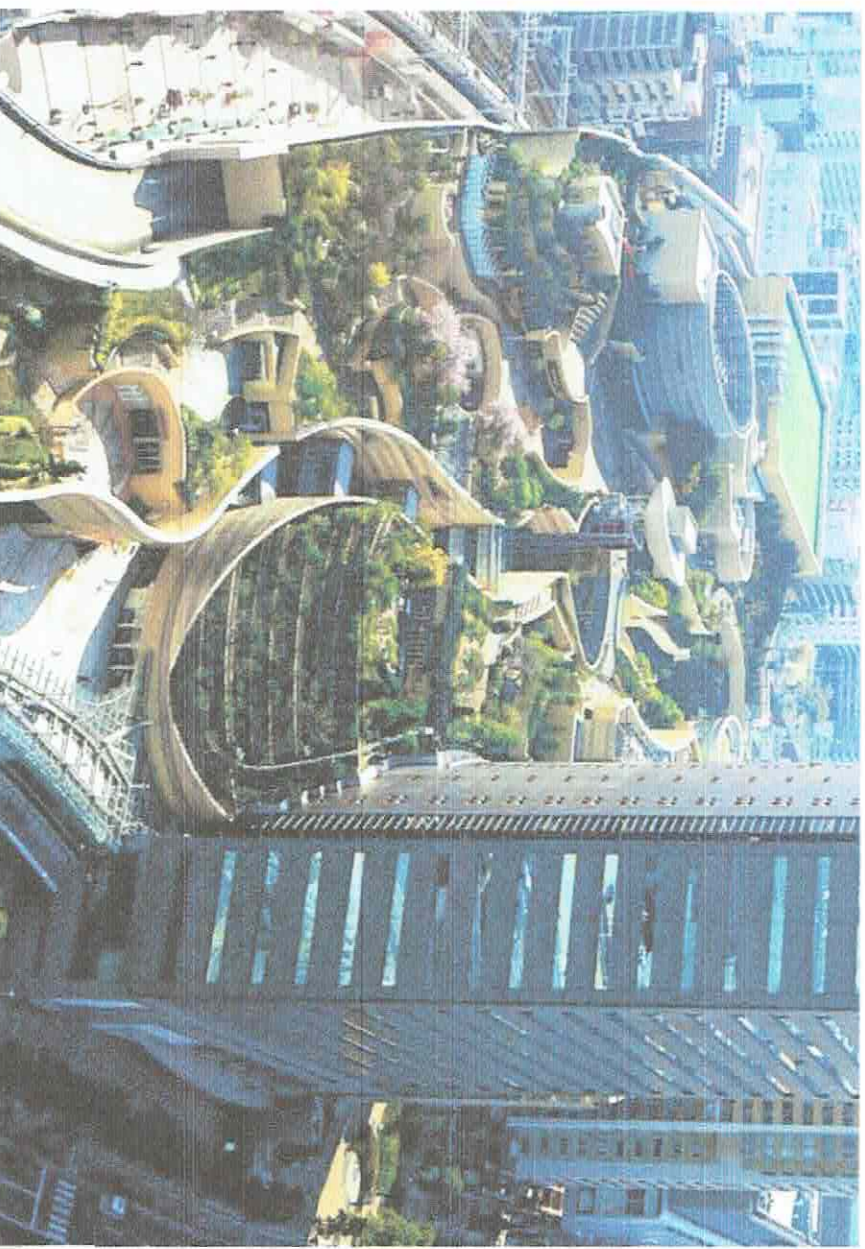
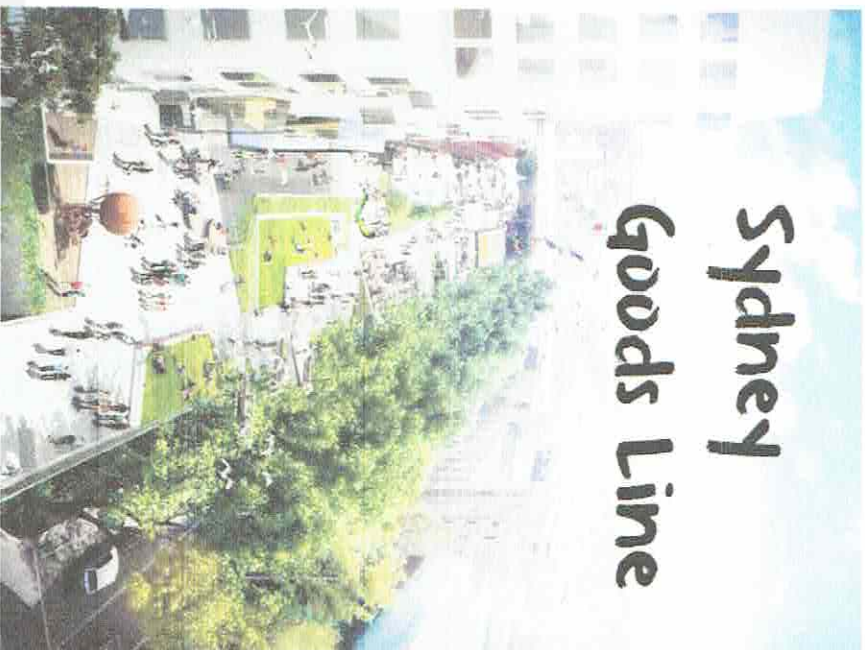
How does  
EQ compare?



**Elizabeth Quay, Perth**

**Namba Park,  
Japan**

**Sydney  
Goods Line**



# Ever Wondered

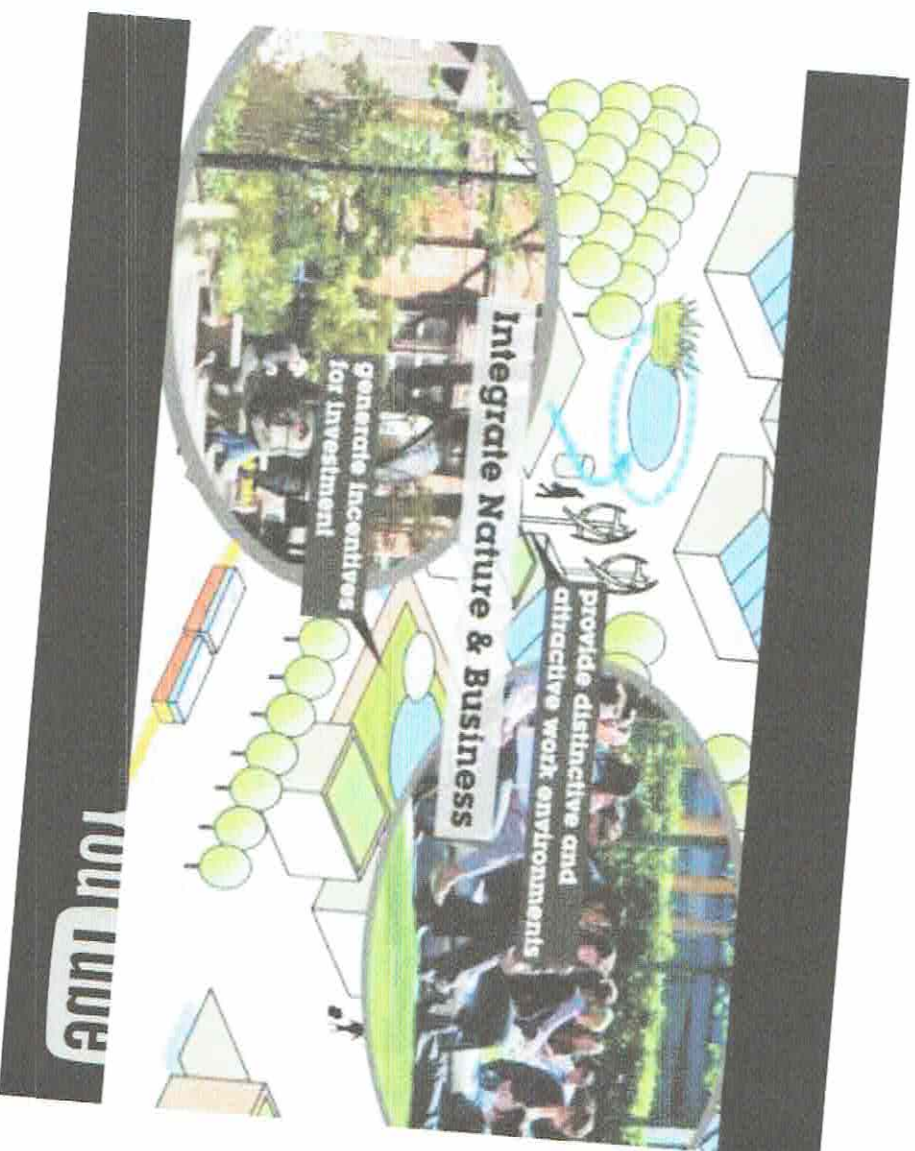
## Where the rain goes

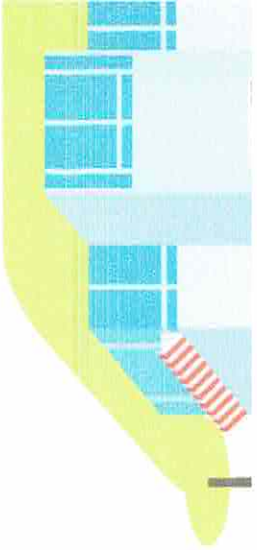
demonstrates how changes to the natural water cycle caused by development can be positively managed, and how SUDS turns this challenge into an exciting opportunity contributing to better places.



# How to invest in Green Infrastructure

by  
Landscape  
Institute  
UK





# Let's overcome barriers and explore possibilities for a liveable Perth

8



Only if one works in silo, Kermit.  
Easier when more along the supply  
chain works together to  
find solutions to challenges in  
delivery of Green Infrastructure.

